
Gráficos do WindGuru

Associação Gaúcha de Voo Livre - Sapiranga-RS



windguru
s t a t i o n

Giovani Tonel – Piloto de Paraglider

nov/2015

Objetivo



windguru
s t a t i o n

- **EXPLICAR A USABILIDADE DOS GRÁFICOS DO WINDGURU**
 - **USO DOS WIDGETS EM SITES**
-

WindGuru Station



windguru
s t a t i o n

- Agosto 2015: Aquisição da Estação
 - Setembro 2015: traslado (República Tcheca → Suíça → Brasil)
 - Outubro 2015: Testes off-line em Porto Alegre-RS
 - Novembro 2015: Entrega a TecSystem em Sapiranga. Instalação concluída no dia 17.
-

WindGuru Station



windguru
s t a t i o n

➤ Links

➤ Página da AGVL (página de testes)

➤ http://www.agvl.esp.br/weather_station/weather_wg_station.html

➤ Diretos da WindGuru

➤ <http://www.windguru.cz/wglive-iframe.php?s=428&wj=kmh&tj=c>

➤ <http://www.windguruspot.cz/428>

.

WindGuru Station



windguru
s t a t i o n

➤ Widgets

A WindGuru disponibiliza **Widgets** para inclusão das informações em outros sites. Basta copiar os **códigos** abaixo e incluir nas páginas de interesse, para que apareça nestes as informações que estação está lendo e enviando direto para o servidor da WindGuru.

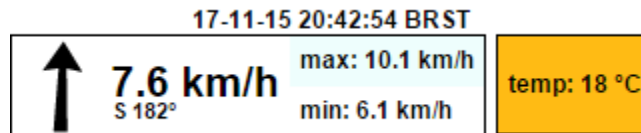
WindGuru Station



windguru
s t a t i o n

- Widget de condições atuais

```
<script src="http://www.windguru.cz/js/wgs\_widget.php"></script>
<script>
WgsWidget({
id_station: 428,
wj: 'kmh',
tj: 'c',
tmprh: true,
date_format: 'd-m-Y H:i:s T',
divid: 'wgs_widget_428_1444058743321',
type: 'curr'
});
</script>
<div id="wgs_widget_428_1444058743321"></div>
```



WindGuru Station



windguru
s t a t i o n

- Widget de Gráfico de Temperatura (- 6h)

```
<script src="http://www.windguru.cz/js/wgs_widget.php"></script>
```

```
<script>
```

```
WgsWidget({
```

```
id_station: 428,
```

```
width: null,
```

```
height: 250,
```

```
hours: 6,
```

```
tj: 'c',
```

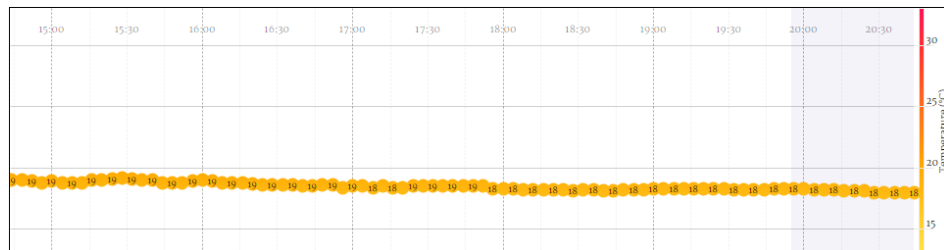
```
divid: 'wgs_widget_428_1444057798813',
```

```
type: 'temp'
```

```
});
```

```
</script>
```

```
<div id="wgs_widget_428_1444057798813"></div>
```



WindGuru Station



windguru
station

- Widget de Gráfico das Condições do Vento (-6h)

```
<script src="http://www.windguru.cz/js/wgs_widget.php"></script>
```

```
<script>
```

```
WgsWidget({
```

```
id_station: 428,
```

```
width: 960,
```

```
height: 250,
```

```
hours: 6,
```

```
wj: 'kmh',
```

```
gustiness: false,
```

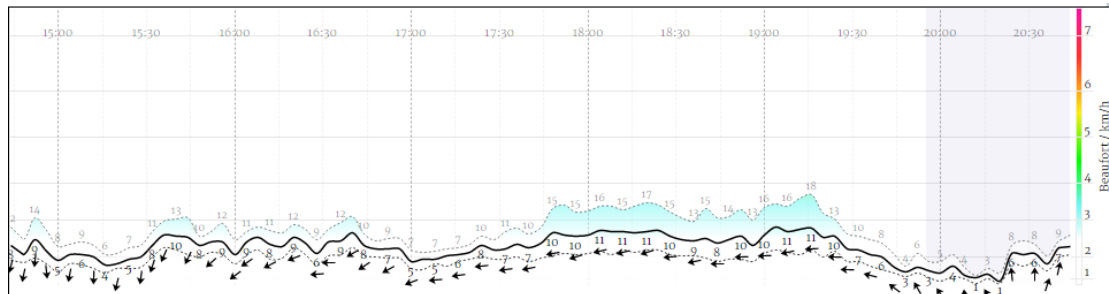
```
divid: 'wgs_widget_428_1444053246830',
```

```
type: 'wind'
```

```
});
```

```
</script>
```

```
<div id="wgs_widget_428_1444053246830"></div>
```



WindGuru Station



windguru
s t a t i o n

- Widget de Gráfico das Condições do Vento (-1h)

```
<script src="http://www.windguru.cz/js/wgs_widget.php"></script>
```

```
<script>
```

```
WgsWidget({
```

```
id_station: 428,
```

```
width: 960,
```

```
height: 250,
```

```
hours: 1,
```

```
wj: 'kmh',
```

```
gustiness: false,
```

```
divid: 'wgs_widget_428_1444056495577',
```

```
type: 'wind'
```

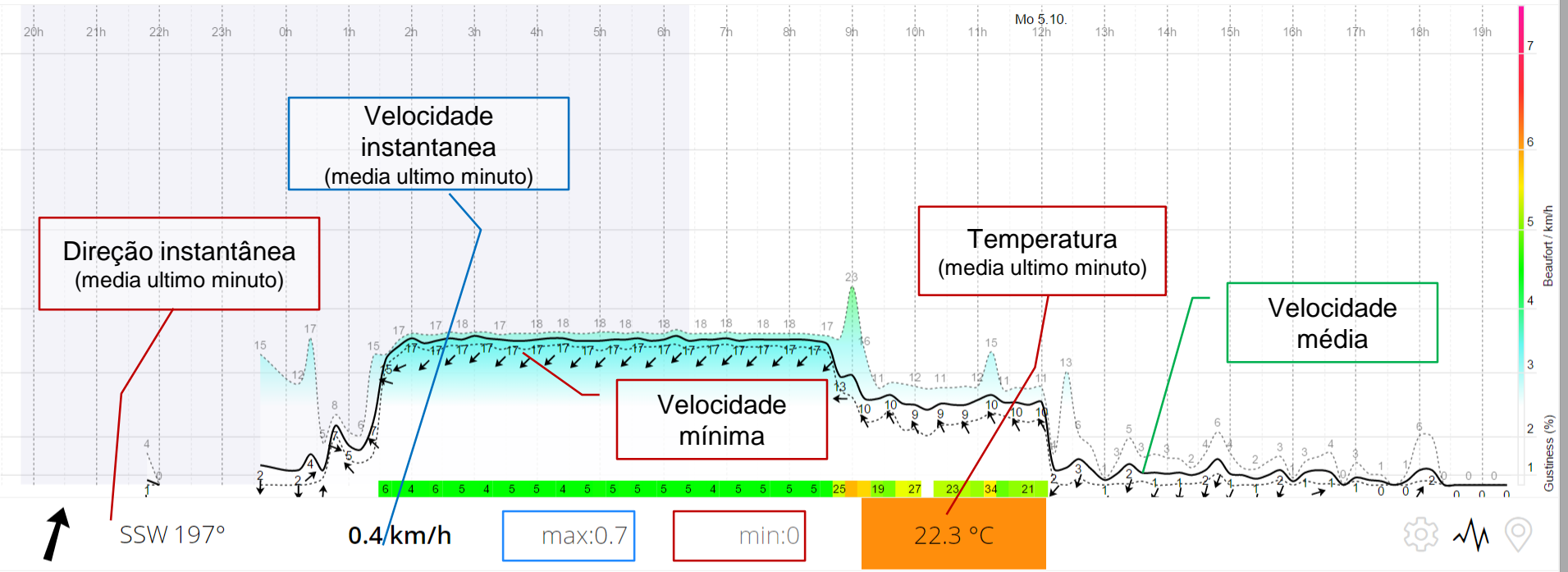
```
});
```

```
</script>
```

```
<div id="wgs_widget_428_1444056495577"></div>
```



Morro Ferrabraz, Sapiranga-RS, Brazil, WeatherStationAGVL

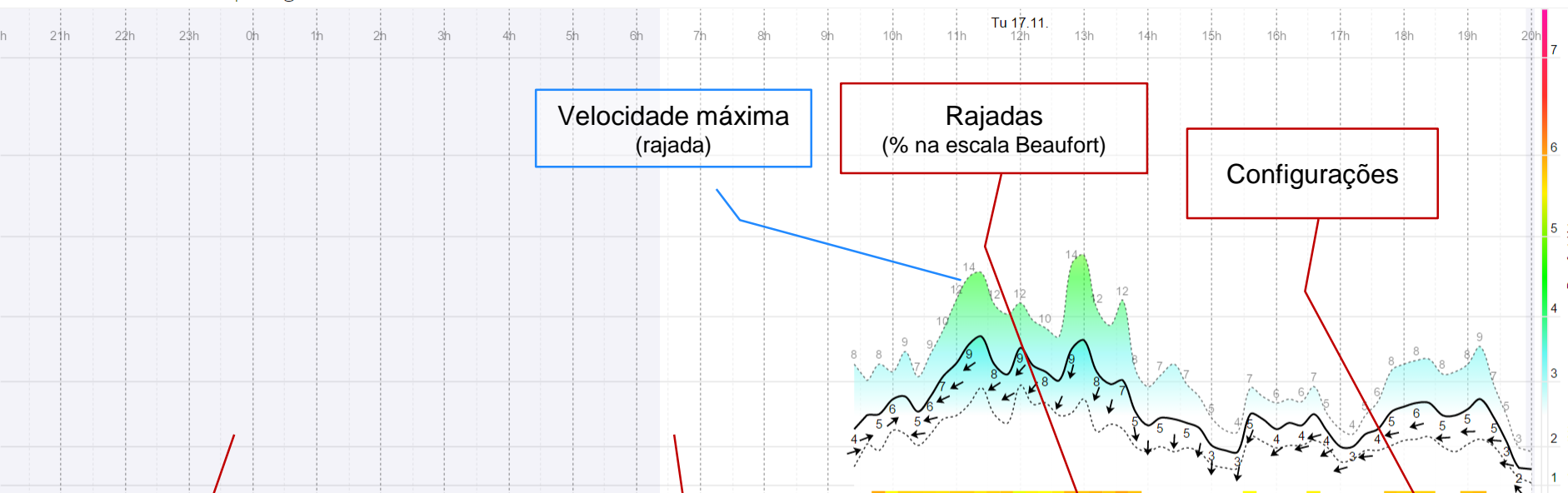


spot guru



partners





S 183°

3.7 kts

max:4.5

min:2.5

18.3 °C

54 41 43 42 33 51 44

30

33

45

43

46

3h

6h

12h

1d

2d

7d

14d

knots

m/s(0.1)

m/s

mph

km/h

°C

°F

wind

temperature

Período da noite

Período do dia

Forçar atualização

Velocidade máxima (rajada)

Rajadas (% na escala Beaufort)

Configurações

WindGuru Station

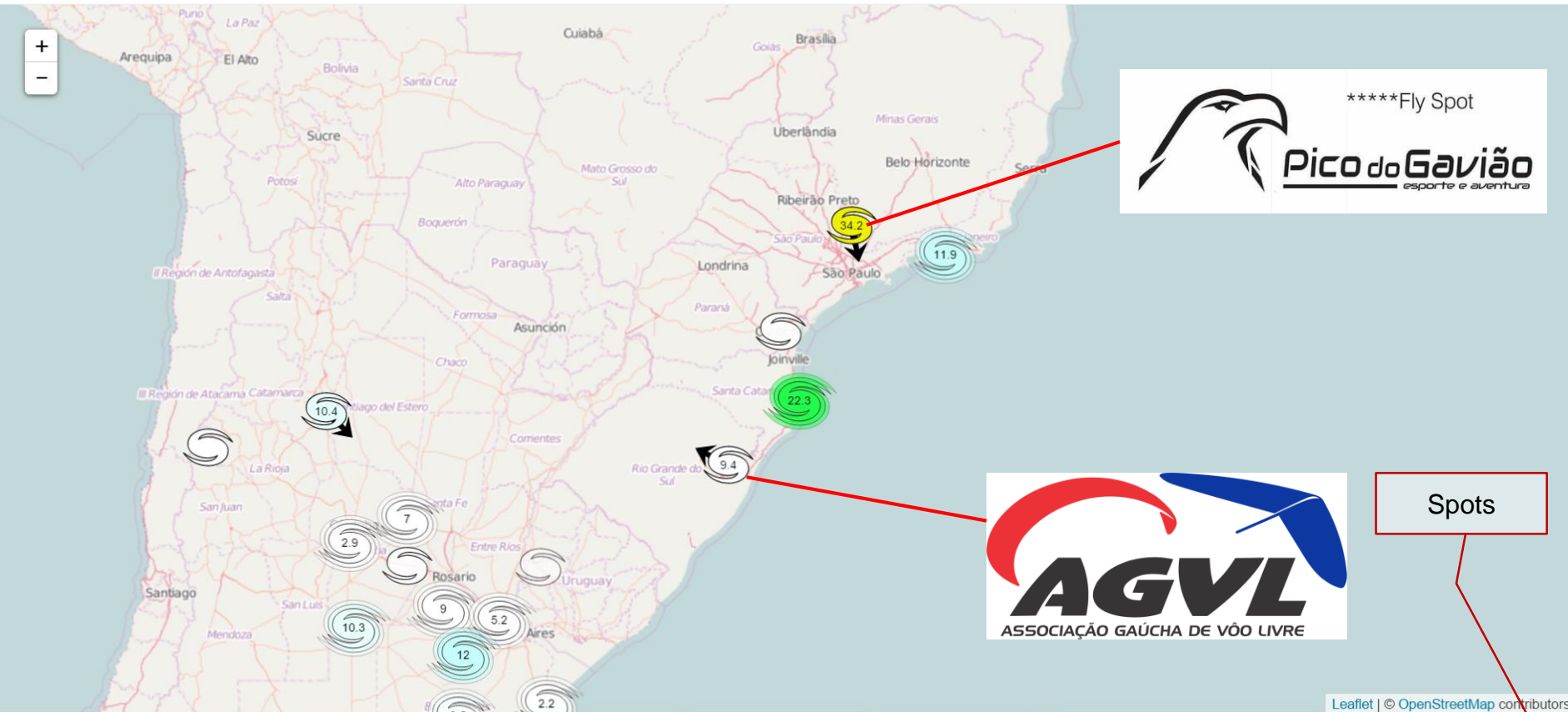


windguru
station

➤ Escala de força do vento (Beaufort)

Beaufort number	Description	Wind speed		Sea conditions	Land conditions
		kts	km/h		
0	Calm	< 1	< 1	Flat.	Calm. Smoke rises vertically.
1	Light air	1 – 2	1 – 5	Ripples without crests.	Wind motion visible in smoke.
2	Light breeze	3 – 6	6 – 11	Small wavelets. Crests of glassy appearance, not breaking	Wind felt on exposed skin. Leaves rustle.
3	Gentle breeze	7 – 10	12 – 19	Large wavelets. Crests begin to break; scattered whitecaps	Leaves and smaller twigs in constant motion.
4	Moderate breeze	11 – 15	20 – 28	Small waves with breaking crests. Fairly frequent white horses.	Dust and loose paper raised. Small branches begin to move.
5	Fresh breeze	16 – 20	29 – 38	Moderate waves of some length. Many white horses. Small amounts of spray.	Branches of a moderate size move. Small trees begin to sway.
6	Strong breeze	21 – 26	39 – 49	Long waves begin to form. White foam crests are very frequent. Some airborne spray is present.	Large branches in motion. Whistling heard in overhead wires. Umbrella use becomes difficult. Empty plastic garbage cans tip over.
7	High wind, Moderate gale, Near gale	27 – 33	50 – 61	Sea heaps up. Some foam from breaking waves is blown into streaks along wind direction. Moderate amounts of airborne spray.	Whole trees in motion. Effort needed to walk against the wind. Swaying of skyscrapers may be felt, especially by people on upper floors.
8	Gale, Fresh gale	34 – 40	62 – 74	Moderately high waves with breaking crests forming spindrift. Well-marked streaks of foam are blown along wind direction. Considerable airborne spray.	Some twigs broken from trees. Cars veer on road. Progress on foot is seriously impeded.
9	Strong gale	41 – 47	75 – 88	High waves whose crests sometimes roll over. Dense foam is blown along wind direction. Large amounts of airborne spray may begin to reduce visibility.	Some branches break off trees, and some small trees blow over. Construction/temporary signs and barricades blow over. Damage to circus tents and canopies.
10	Storm, Whole gale	48 – 55	89 – 102	Very high waves with overhanging crests. Large patches of foam from wave crests give the sea a white appearance. Considerable tumbling of waves with heavy impact. Large amounts of airborne spray reduce visibility.	Trees are broken off or uprooted, saplings bent and deformed. Poorly attached asphalt shingles and shingles in poor condition peel off roofs.
11	Violent storm	56 – 63	103 – 117	Exceptionally high waves. Very large patches of foam, driven before the wind, cover much of the sea surface. Very large amounts of airborne spray severely reduce visibility.	Widespread vegetation damage. Many roofing surfaces are damaged; asphalt tiles that have curled up and/or fractured due to age may break away completely.
12	Hurricane	≥ 64	≥ 118	Huge waves. Sea is completely white with foam and spray. Air is filled with driving spray, greatly reducing visibility.	Very widespread damage to vegetation. Some windows may break; mobile homes and poorly constructed sheds and barns are damaged. Debris may be hurled about.

Q Morro Ferrabraz, Sapiranga-RS, Brazil, WeatherStationAGVL



Spots



E 87°

10.8 km/h

max:19.4

min:6.5

17.8 °C

